

# GC AGM55

## Product card

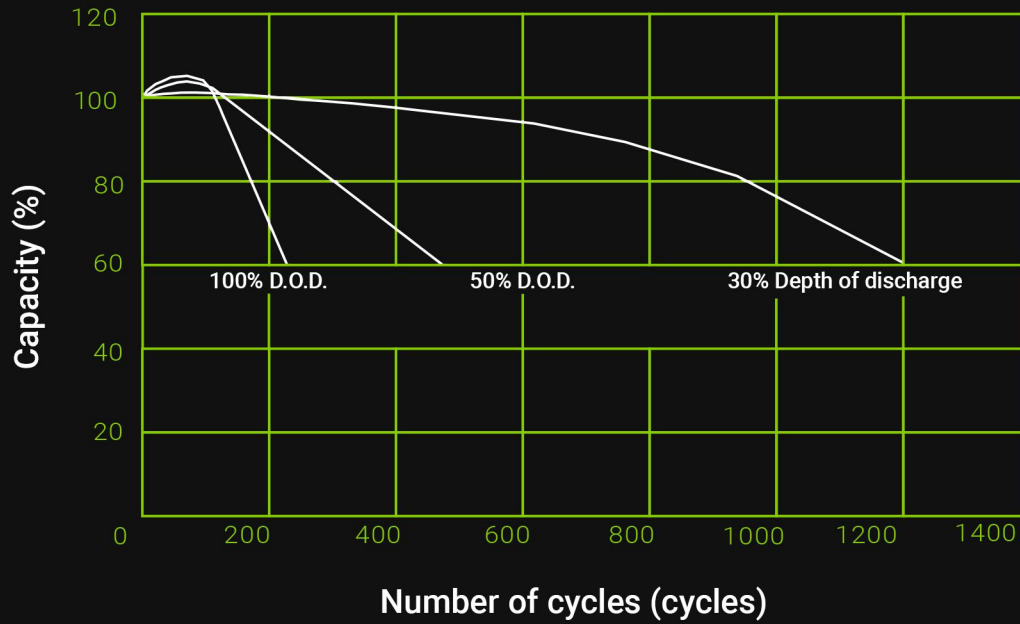


### Electrical Specification:

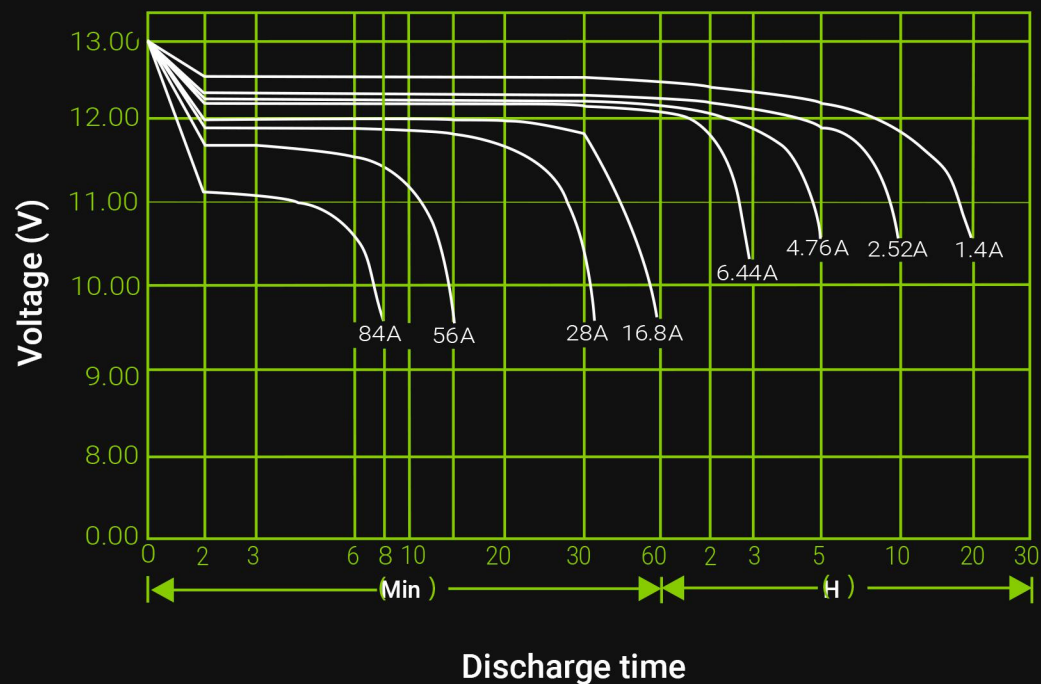
Capacity 25°C (77°F)	20hour rate(1.4A)	28.0Ah
	27min rate(28A)	12.6Ah
	7min rate(84A)	9.8Ah
Capacity Affected by Temperature (20hour rate)	40°C (104°F)	102%
	25°C (77°F)	100%
	0°C (32°F)	85%
	-15°C (5°F)	65%
Internal Resistance	full charged battery 25°C (77°F)	10mΩ
Self-Discharge at 25°C (77°F)	Capacity after 3 month storage	91 %
	Capacity after 6 month storage	82 %
	Capacity after 12 month storage	64 %

Charge (constant Voltage)	Cycle	Initial Charging Current less than 8.4A Voltage 14.40-14.90V
	Float	Voltage 13.50-13.80V

**Cycle service life in relation to depth of discharge:**



**Discharge Characteristics after fully charged (25°C, 77°F):**



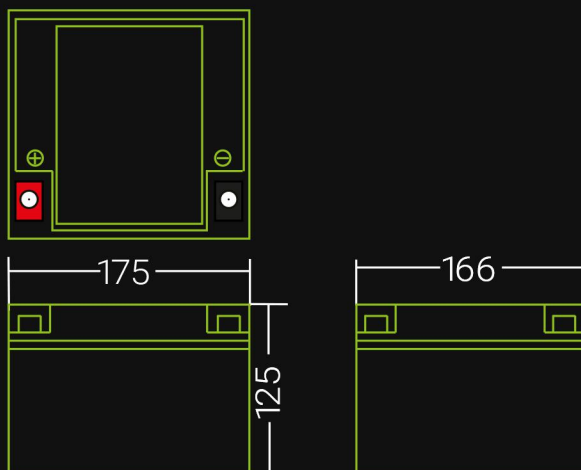
## Constant Current (Amp) and Constant Power (watt) Discharge Table at 25°C (77°F):

time		5min	10min	15min	30min	1h	2h	3h	4h	5h	8h	10h	20h
9.60V	A	112.00	75.60	53.20	32.20	16.80	9.80	7.20	5.77	4.90	3.22	2.66	1.428
	W	1189.4	802.9	565.0	341.3	193.5	112.9	83.26	66.85	56.79	37.32	30.86	16.78
10.20V	A	100.80	68.74	47.88	30.52	15.68	9.38	7.03	5.60	4.79	3.16	2.60	1.428
	W	1118.9	763.0	531.0	339.4	181.6	108.6	81.38	64.96	55.68	36.80	30.28	16.61
10.50V	A	95.20	65.52	44.80	29.62	15.23	9.21	6.92	5.35	4.73	3.16	2.60	1.400
	W	1078.6	742.3	507.6	335.9	176.7	106.9	80.23	62.04	54.89	36.70	30.21	16.31
10.80V	A	88.65	62.10	42.00	28.81	14.76	8.96	6.78	5.24	4.54	3.05	2.49	1.372
	W	1030.1	721.6	488.0	334.8	171.5	104.1	78.74	60.84	52.94	35.86	29.28	16.01
11.10V	A	84.00	58.80	39.20	28.00	14.25	8.76	6.41	5.10	4.34	3.00	2.44	1.305
	W	999.6	699.7	466.5	333.2	169.6	104.3	76.43	60.74	51.73	35.71	29.04	15.55

### Physical specification:

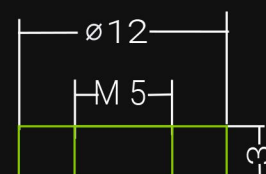
Nominal Voltage		12V
Nominal Capacity(20HR)		28AH
Dimensions	Length	166±1 mm (6.54 inches)
	Width	175±1 mm (6.89 inches)
	Container Height	125±2 mm (4.92 inches)
	Total Height	125±2 mm (4.92inches)
Weight		Approx 7.8kg (17.16 lbs)
Standard terminal		T6

### Dimensions (mm):



### Terminal type:

Standard Terminal ( T6 )



( in mm )